

2023-2024 Massachusetts School Immunization Survey Results



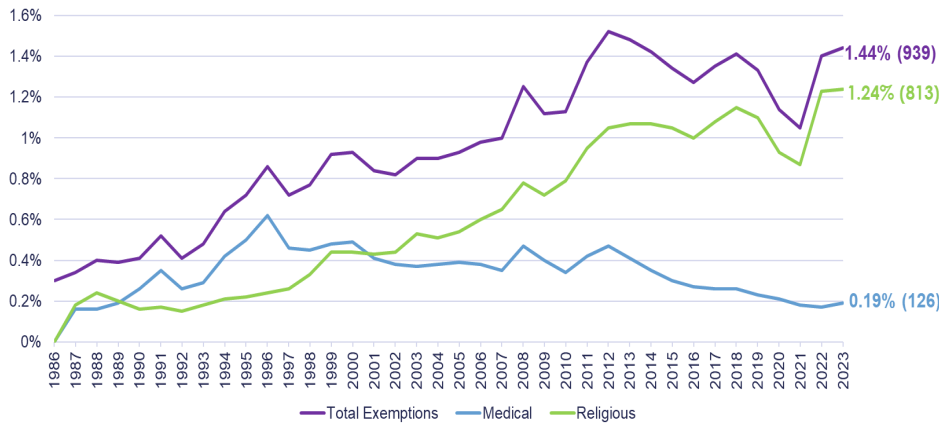
The annual Massachusetts Department of Public Health (MDPH) **Child Care/Preschool, Kindergarten, Grade 7, Grade 12, and College Immunization Surveys** have been completed for the 2023-2024 school year. The data have been reviewed and are posted on the *mass.gov* website. *Data shown comes from Kindergarten – Grade 12 surveys.*

Definitions & Survey Data

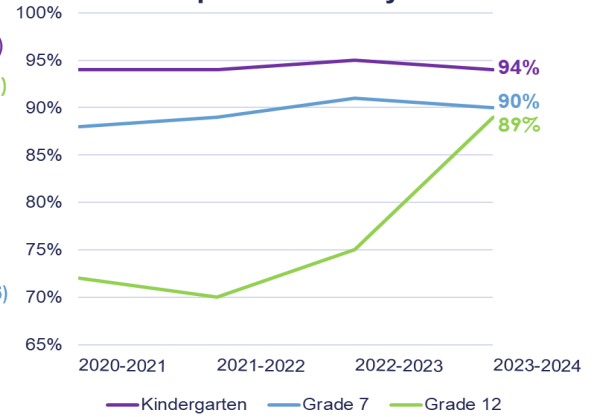
- Exemption Rate** = Proportion of students with medical or religious exemption on file
- Compliance Rate** = Proportion of students who meet school requirements or have exemption on file
- Series Complete Rate** = Proportion of students who meet school requirements (*Does not include students with exemptions*)

Total Schools in Massachusetts: 2,252	Total Surveys Submitted: 2,428
Total Students Assessed: 204,848	Response Rate K = 86% G7 = 78% G12 = 73%

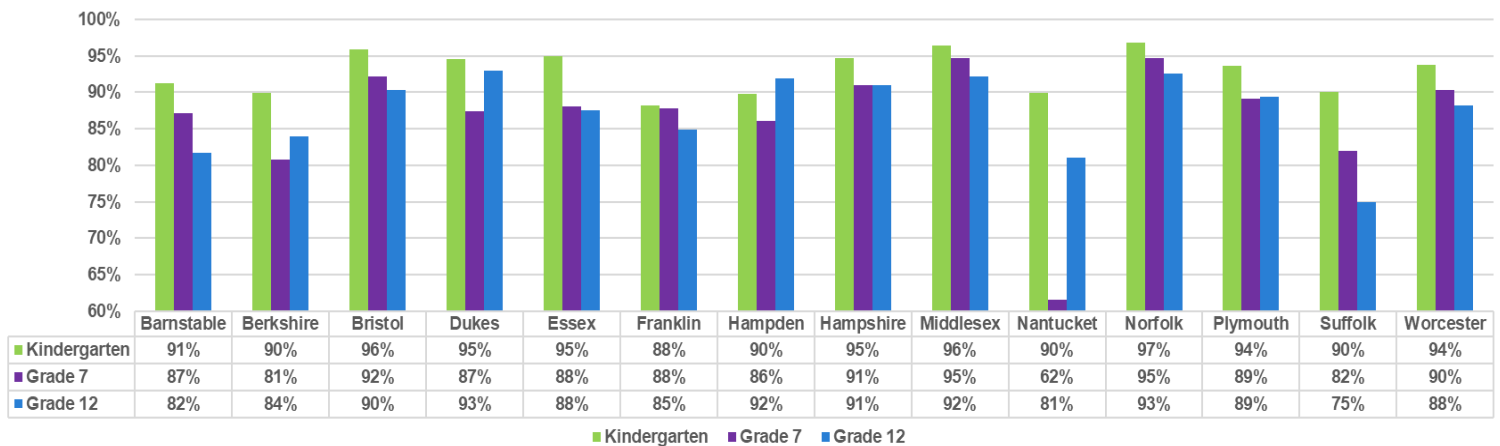
Exemption Rates, 1986-2023



Compliance Rate by Grade



Series Complete Rate by County



Exemption Rate by Type

- Exemption Rate (ER) in total has steadily **increased over time** since data collection began in 1986
- Total ER increase likely **reflects the increase in religious exemptions** over time
- Reciprocally, **medical exemptions have steadily decreased** since 2012

Compliance Rate by Grade

- Compliance rate (CR) is highest **amongst Kindergarten** students and lowers with increasing grade
- Kindergarten and Grade 7 CR has remained consistent for the past 4 years
- Grade 12 CR has sharply increased** this year likely in part to surveying in Grade 12 rather than Grade 11

Series Complete Rate by County

- Series complete rate (SCR) remains relatively stable amongst particular grades between counties
- Due to the lower number of students, **SCR is more sensitive in counties such as Franklin and Nantucket**, which may contribute to lower SCR compared to neighboring counties